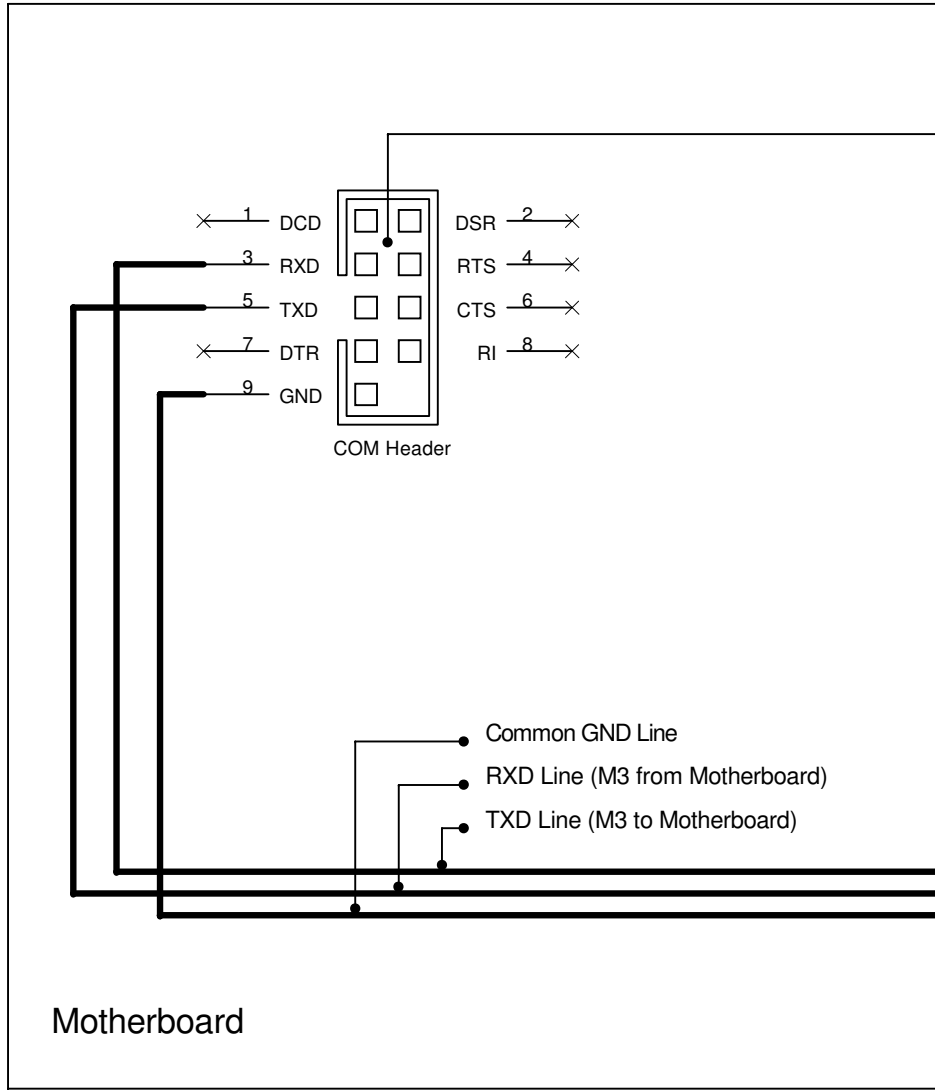


Additional COM header on the Motherboard:
Please check in the Motherboard User Manual,
and try to find where it is placed.

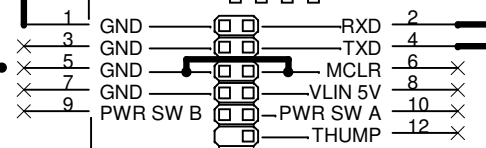
Compatible motherboards list:

- UM VT310-DP
- Jetway J7F2WE2G
- 627F Series
- Jetway J7F5M1G5D-VHE
- Jetway Hybrid J7F2WE1G5D
- Jetway Hybrid J7F2WE1G2E
- Jetway Versa J7F4K1G5D
- Jetway Versa J7F4K1G2E
- VIA EPIA-EK10000G
- ALIX1C (ALIX.1C) mini-itx board



Common GND Line
RXD Line (M3 from Motherboard)
TXD Line (M3 to Motherboard)

M3 ATX Pico Dragon PSU



Motherboard

Three wire SERIAL LINK
between Motherboard and M3 ATX Pico Dragon PSU.

IMPORTANT NOTE!!!
Don't forget to SHORT pin 5 and 6 on M3 ATX header!